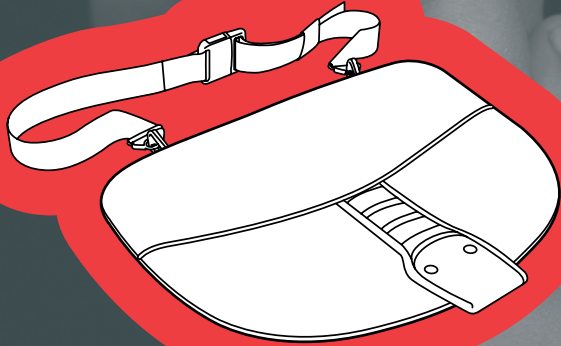




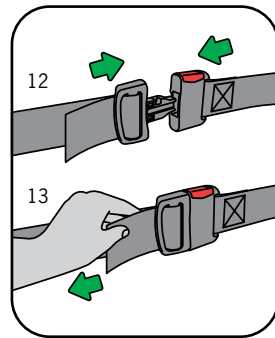
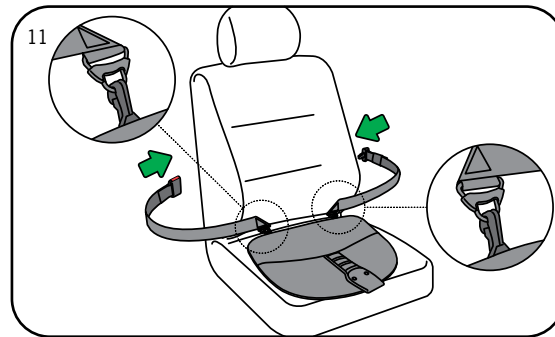
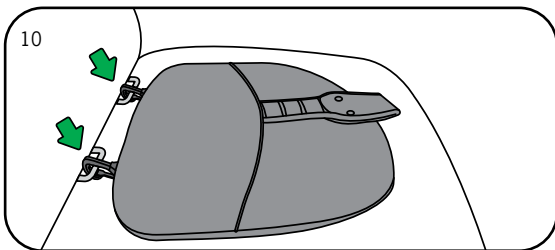
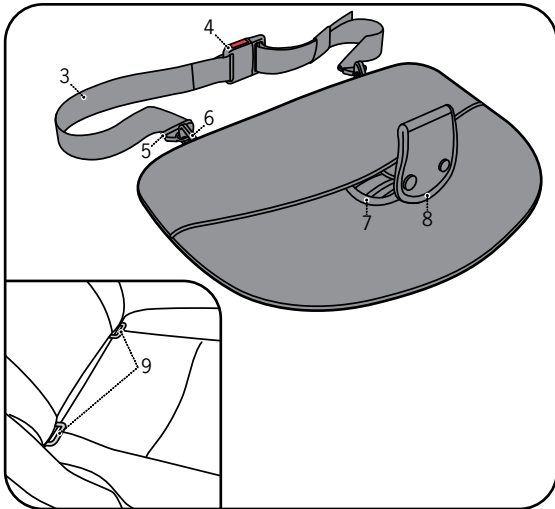
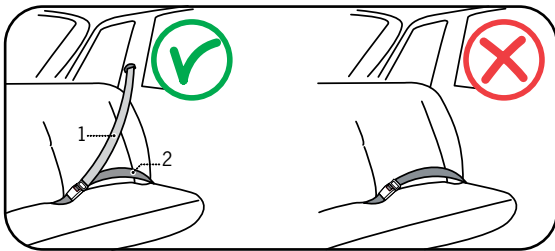
# Pregnant iZi fix™

USER MANUAL



RECOMMENDED FROM 2 MONTHS OF PREGNANCY

**BeSafe**®



## Thank you for choosing BeSafe Pregnant

The BeSafe Pregnant iZi FIX is for pregnant women to help position the lap belt of the 3-point car belt correctly.

### Contents

Vital information	6
Preparing to install	7
Pregnant belt installation in seat with isofix anchorages	7
Pregnant belt installation in seat without isofix anchorages	7
Using BeSafe Pregnant	8
Cleaning instructions	8
Warning: potential misuse	8
Point of sale information	9
Important advice	9
Guarantee	9

### Vital information

- ! DO NOT switch off the airbag or any other safety system of the particular vehicle seat where the BeSafe Pregnant is used.
- Use the BeSafe Pregnant only in combination with a 3-point car belt (shoulder belt (1), lap belt (2)).
- Use the BeSafe Pregnant from 2 months of pregnancy.
- After an accident, the BeSafe Pregnant must be replaced. Although it may look undamaged, the BeSafe Pregnant may not be able to protect mother and unborn child as well as it should in another accident.
- Before every use, make sure that the 3-point belt is not damaged or twisted and installed tight.

### Preparing to install

#### Crucial parts

- Strap (3)
- Strap buckle (4)
- Strap ring (2x) (5)
- FIX connectors (2x) (6)
- Crotch strap (7)
- Lap belt connector (8)
- Isofix car anchorage (2x) (9)

### Pregnant belt installation in seat with isofix anchorages

In seats with isofix anchorages the BeSafe Pregnant can be installed with the fix connectors.

1. Remove the strap from the pregnant belt.
2. Connect both fix connectors with the isofix anchorages of the vehicle seat.
3. Click! (10)

### Pregnant belt installation in seat without isofix anchorages

In seats without isofix anchorages BeSafe Pregnant can be installed with the strap.

1. Put the strap around the back of the vehicle seat and close the buckle (11).
2. Click! (12).
3. Pull the strap through the buckle until it is tight (13).

When the vehicle seats do not have isofix anchorage or no possibility to put the strap around the seat, BeSafe Pregnant can not be used in this particular vehicle seat position. !

## Using BeSafe Pregnant

After installing the BeSafe Pregnant in the vehicle seat, it is ready for use.

1. Sit on top of the pregnant belt and install the 3-point car belt in the usual way (14).
2. Pull the flap of the lap belt connector up between your legs and position the flap behind the lap belt (15).
3. Close the flap of the lap belt connector over the lap belt by closing both poppers (15).
4. Make sure there is no slack in the 3-point car belt.
5. Make sure that the lap belt is positioned low across the hips.

! Use the BeSafe Pregnant only in combination with a 3-point car belt.

## Cleaning instructions

- The pregnant belt must be washed according to the instructions on the product.
- DO NOT use any aggressive cleaning agents; these may harm the construction material.

## Warning: potential misuse

- !
- DO NOT switch off the airbag or any other safety system of the particular vehicle seat where the BeSafe Pregnant is used.
  - DO NOT use the BeSafe Pregnant without 3-point car belt.
  - DO NOT use the BeSafe Pregnant without connection with the vehicle seat.

## Point of sale information

- The BeSafe Pregnant makes sure that the lapbelt of the 3-point car belt is always in the right position to protect the mother and her unborn child.
- The BeSafe Pregnant can be used in every vehicle seat position, either with a strap around the vehicle seat or with usage of the isofix anchorages in the vehicle seat.

## Important advice

- DO NOT attempt to dismantle, modify or add any part to the seat. Warranty will expire if non-original parts or accessories are used.
- KEEP this user manual for later use.

## Guarantee

- Should this product prove faulty within 12 months of purchase due to materials or manufacturing faults, please return it to the original place of purchase.
- The guarantee is only valid when you use your product appropriately and with care. Please contact your dealer, who will decide if the product will be returned to the manufacturer for repair, replacement or return cannot be claimed. The guarantee does not get extended through repair.
- The guarantee expires: when there is no receipt, when defects are caused by wrong and improper use, when defects are caused by abuse, misuse or negligence.

B101-0801A  
N2002250

HTS BeSafe as  
N-3535 Krøderen, Norway - [www.besafe.eu](http://www.besafe.eu)

**BeSafe**<sup>®</sup>